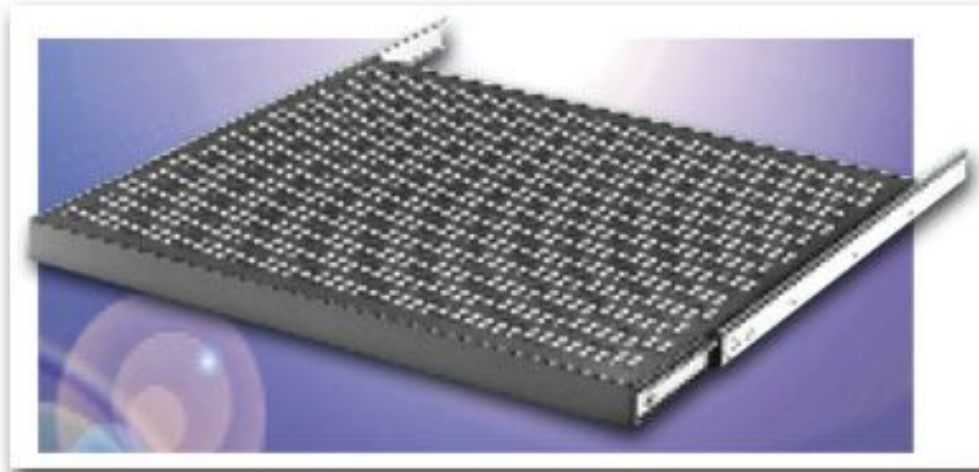




Accessories - Shelves  
**Ventilated Sliding Shelves**

***Design Features***

Sliding shelves come in widths that either fit 19" or 24" wide panel spaces and all cabinet rack depths. Shelves are 16-gauge steel and flanged on all four sides for added support. Universal mounting brackets allow flexibility in mounting. Shelves allow sufficient room in rear for cables and power outlet strips. Requires two pairs of panel mounting rails per cabinet rack. Also Available in a Non-Ventilated version.



Sliding Shelves Ventilated								
Catalog Number	Drawings	Panel Width	Max. Clear Inside Depth	Width	Depth	Load Rating Lbs.	Travel	Weight Lbs.
SH-2391		19.00"	17.00"	17.00"	14.25"	140	8.00"	8.75
SH-2392		19.00"	20.50"	17.00"	17.75"	120	12.00"	9.75
SH-2393		19.00"	24.00"	17.00"	21.25"	92	15.00"	12

SH-2394		19.00"	29.25"	17.00"	26.50"	70	19.00"	13.5
SH-2491		24.00"	17.00"	22.00"	14.25"	140	8.00"	10
SH-2492		24.00"	20.50"	22.00"	17.75"	120	12.00"	11.5
SH-2493		24.00"	24.00"	22.00"	21.25"	92	15.00"	14
SH-2494		24.00"	29.25"	22.00"	26.50"	70	19.00"	15.75



PART NAME

SLIDING SHELF

PART No.

SH-2387 TO SH-2494

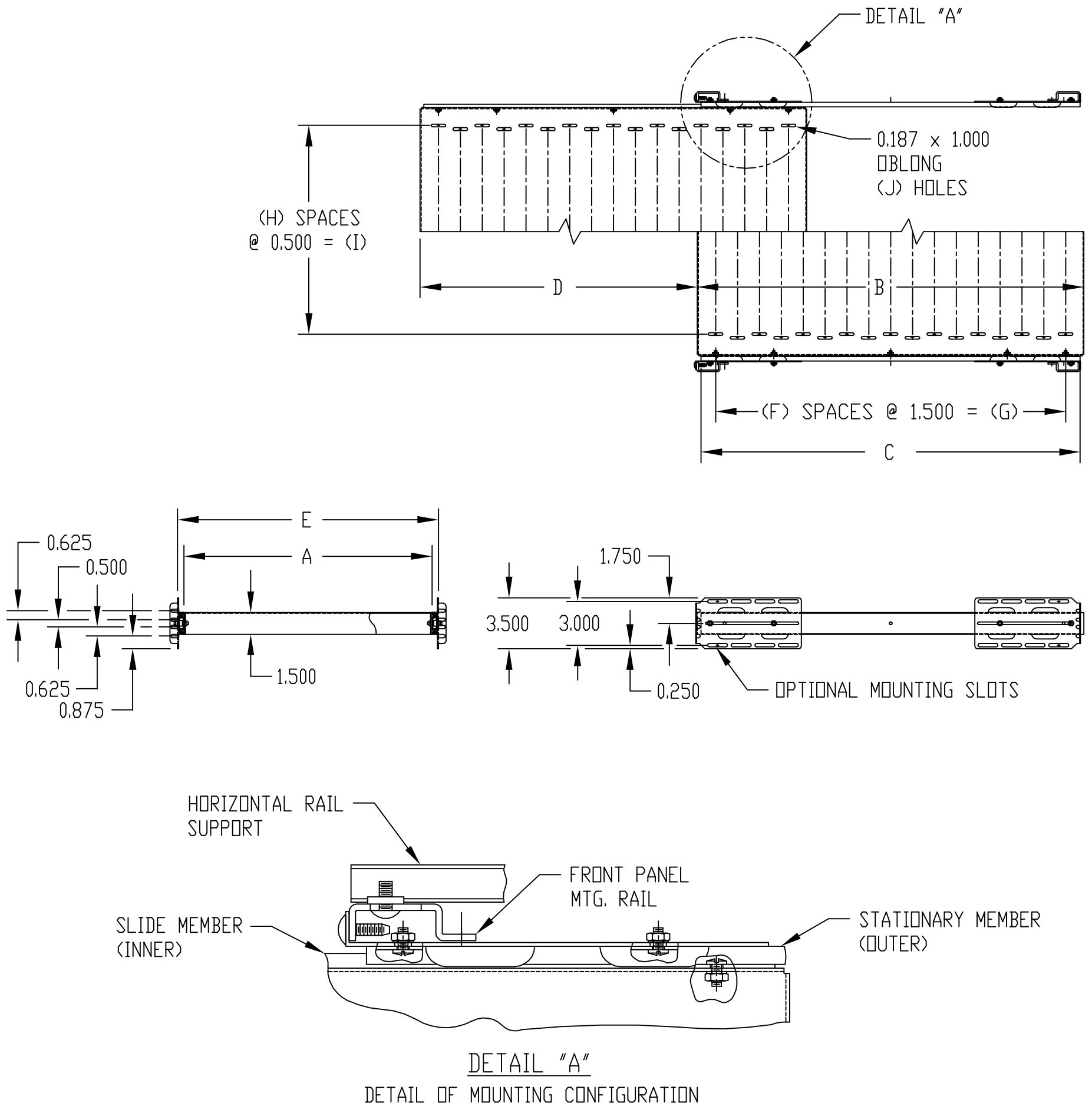
**MATERIAL:**

SHELF & MOUNTING BRACKETS \_\_\_\_\_ 16 GA. STEEL

**FINISH:**

SHELF & MOUNTING BRACKETS \_\_\_\_\_ SMOOTH BLACK

SLIDES \_\_\_\_\_ BRIGHT ZINC PLATE



PART NO.		SHELF		SLIDE			E	F	G	H	I	J
PLAIN	VENTED	A	B	LENGTH C	TRAVEL D	LOAD RATING						
SH-2387	SH-2391	17	14.250	12	9	140	17.875	8	12.000	29	14.500	270
SH-2388	SH-2392		17.750	16	12	120		10	15.000			330
SH-2389	SH-2393		21.250	20	15	92		12	18.000			390
SH-2390	SH-2394	17	26.500	26	19	70	17.875	16	24.000	29	14.500	510
SH-2487	SH-2491	22	14.250	12	9	140	22.875	8	12.000	41	20.500	378
SH-2488	SH-2492		17.750	16	12	120		10	15.000			462
SH-2489	SH-2493		21.250	20	15	92		12	18.000			546
SH-2490	SH-2494	22	26.500	26	19	70	22.875	16	24.000	41	20.500	714